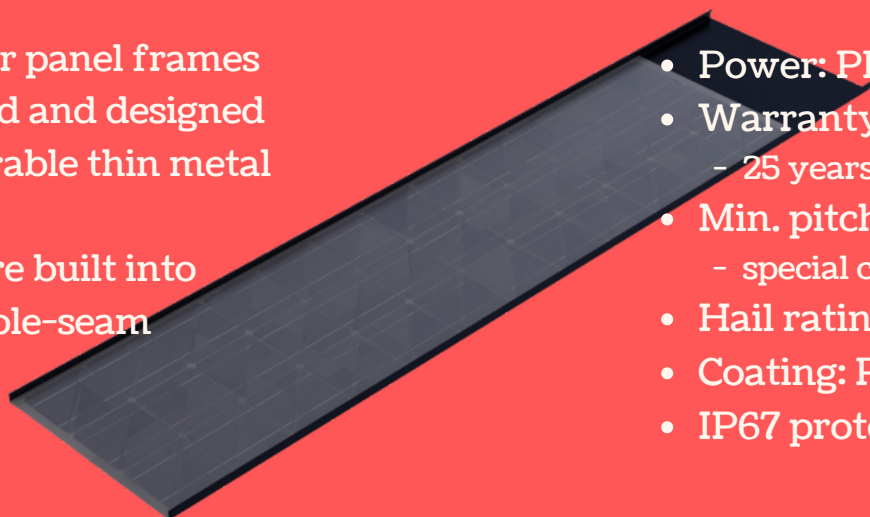


PRODUCT DESCRIPTION

B-InRoof solar panel frames are engineered and designed with very durable thin metal sheet.

The frames are built into standing double-seam technology.



WARRANTY STATEMENT

- Power: PERC mono cells
- Warranty: 10 years @ 90%
- 25 years linear @ 80%
- Min. pitch: 10 degree
- special cases: 2 degree
- Hail rating: 35 mm
- Coating: Polyurethane
- IP67 protection rating



ELECTRICAL

• Pn:	135W	170W	210W
• Tolerance:	+3%	+3%	+3%
• Vmppt:	12.0V	15.0V	18.0V
• Imppt:	11.25A	11.34A	11.67A
• Voc:	14.52V	18.15V	21.78V
• Isc:	11.76A	11.85A	12.19A

Nominal Operation Condition:

- irradiation: 1000 W/m²
- temp: 20 °C | NOTC: 47°C
- wind: 1.0 m/s

sysVolt: 1000 V

Fuse: 15 A

MECHANICAL

	135W	170W	210W
• Area (m ²):	0.78	0.97	1.16
• pArea (m ²):	0.67	0.84	1.01
• Weight (kg):	11.5	13.5	16.0
• Colour:	Black		
• Connection:	4 mm ² - MC4		
• Glass:	3.2 mm Tempered		
• Mounting:	Double seam		

Operating Temperature: -40 °C to +85 °C

B-INROOF SYSTEMS IS THE RIGHT PARTNER IN YOUR SOLAR OR BIPV PROJECTS

Your Roof, Your Independence

We combined the three installation processes of solar roof systems into one single process

Nominal Performance Ratio @1000W/m²

-- 208 W/m² = 25.9% Efficiency --

About 5.5 m²/kW area needed



For inquiries, please call +41 76 801 40 36
Address: Blaketen 7, CH-8620 Wetzikon, Switzerland

You can also email your requests to sales@b-inroof.com
www.b-inroof.com | www.facebook.com/BinRoof